

Retrospective Study of B Lymphoblastic Leukemia to Assess the Prevalence of *TEL/AML1* in South India: A Study of 214 Cases and Review of Literature

Sandhya Devi G.¹ Faiq Ahmed¹ Manasi C. Mundada¹ Rachna Khera¹ Lavanya Nambaru¹ Krishnamohan Mallavarapu² Pavan Kumar Boyella² Veerandra Patil² Pallavi Suresh Laddha² Senthil J. Rajappa²

¹Department of Laboratory Medicine, Basavatarakam Indo American Cancer Hospital and Research Institute, Hyderabad, Telangana, India

²Department of Medical Oncology, Basavatarakam Indo American Cancer Hospital and Research Institute, Hyderabad, Telangana, India

Address for correspondence Dr. G Sandhya Devi, PhD, Department of Pathology, Basavatarakam Indo American Cancer Hospital, Hyderabad 500034, Telangana, India (e-mail: sandhyag@induscancer.com).

Ind J Med Paediatr Oncol

Abstract

Introduction Translocation t(12;21)(p13;q22), a recurrent and an invisible chromosomal abnormality, resulting in *TEL/AML1* gene fusion, associated with good prognosis, has been described to be a common abnormality, in children with B-acute lymphoblastic leukemia (B-ALL).

Objectives The initial observation of very few *TEL/AML1* positive patients at this center on testing by fluorescence in situ hybridization (FISH) led to study the prevalence of the abnormality, compare with the global distribution, and evaluate clinical, pathological, molecular, and cytogenetic features in *TEL/AML1* positive patients.

Materials and Methods A retrospective study of all B-ALL patients tested for *TEL/AML1* gene fusion during the period January 2009 to November 2020 was undertaken. Clinicopathological, molecular, cytogenetic, treatment, and follow-up details were collected. All publications dealing with *TEL/AML1* gene rearrangement were reviewed post Google and PubMed search.

Results *TEL/AML1* gene rearrangement was assessed by FISH in 178 patients and by reverse transcription polymerase chain reaction in 36 patients and detected as the sole abnormality in 8.4% patients with additional genetic abnormalities noted on FISH evaluation. Normal karyotype was noted in 14/18 (77.7%) of these patients and 2 had complex karyotype. Complete blood count revealed hemoglobin to range from 35 to 116 g/L (median: 74 g/L), white blood count: 1.01–110×10⁹/L (median: 7.8×10⁹/L), platelet counts: 10–115×10⁹/L (median: 42×10⁹/L), blast count in peripheral smear: 0–98% (median: 41%). Immunophenotyping demonstrated 94.4% were CD34 positive, common acute lymphoblastic leukemia associated antigen (CALLA) positive with aberrant expression of CD13, CD33, CD56, singly or in combination in 58.8%.

Keywords

- ▶ *TEL/AML1*
- ▶ t(12;21) fluorescence in situ hybridization
- ▶ acute lymphoblastic leukemia (ALL)
- ▶ RT-PCR

DOI <https://doi.org/10.1055/s-0042-1742611>.
ISSN 0971-5851.

© 2022. Indian Society of Medical and Paediatric Oncology. All rights reserved.

This is an open access article published by Thieme under the terms of the Creative Commons Attribution-NonDerivative-NonCommercial-License, permitting copying and reproduction so long as the original work is given appropriate credit. Contents may not be used for commercial purposes, or adapted, remixed, transformed or built upon. (<https://creativecommons.org/licenses/by-nc-nd/4.0/>)

Thieme Medical and Scientific Publishers Pvt. Ltd., A-12, 2nd Floor, Sector 2, Noida-201301 UP, India

Conclusion TEL/AML1 fusion is rare in Indian patients with B-ALL and appears to be much rarer in our region. The detection of relevant specific abnormalities is of fundamental importance in B-ALL patients and these geographic variations can be used in defining management policies.

Introduction

Detection of recurrent genetic abnormalities in hematological malignancies by fluorescence in situ hybridization (FISH) is part of routine standard of care. Recurrent cryptic translocation t(12;21)(p13;q22) in pediatric B-acute lymphoblastic leukemia (B-ALL) is associated with specific clinicopathological characteristics and favorable prognosis.¹⁻⁴ Assessment for *TEL/AML1(ETV6/RUNX1)* fusion enables proper treatment strategies in a given population. Review of online hospital-based reports, international projects, multicenter studies, and review articles³⁻⁵ demonstrated a wide variation in global incidence, with incidence in west being ~25%⁴ and lesser in India (► **Table S1** and **S2-supplementary material**).⁵⁻³⁰ However, the initial observation of very less number of prognostically favorable TEL/AML1 rearranged B-ALL patients from our tertiary care cancer center in south India prompted focus on evaluating the prevalence of this abnormality. The aim and objectives of the study were to see the prevalence of *TEL/AML1* gene fusion in newly diagnosed B-ALL patients, compare with the global distribution of the fusion gene, and evaluate the clinical, pathological, molecular, and cytogenetic features where available in *TEL/AML1* positive patients.

Materials and Methods

A retrospective study of all cases, previously diagnosed as B-ALL during the period January 2009 to November 2020, at a tertiary care cancer center from South India, was undertaken. Data on demographic, clinical, hematological, interphase FISH, cytogenetics, reverse transcription polymerase chain reaction (RT-PCR) findings, treatment protocol, and follow-up details were collected from the case files in a format. All the newly diagnosed cases for which ALL prognostic panel (*BCR-ABL*, *TEL-AML1*, *MLL*) was performed and TEL AML result was available were included in the study. All cases where adequate blasts counts were not evident and also relapsed ALL cases were excluded from the study. Primary outcome provides information on the prevalence of TEL/AML1 gene fusion positivity in patients diagnosed with B-ALL from this region and for understanding how the prevalence compares with the global incidence for managing the patients. Secondary outcome includes defining the clinicopathologic features, cytogenetics and FISH findings, baseline lab values and overall survival in the TEL AML1 positive patients that were analyzed.

FISH: Interphase FISH studies were performed till November 2019, on heparinized bone marrow/peripheral blood fixed samples in 178 patients. LSI ETV6(TEL)/RUNX1(AML1) extra signal dual color translocation probe set and ZytoLight-ETV6/RUNX1(TEL/AML1) dual color dual fusion probe were

used for testing in 81 and 97 samples, respectively. The probe details, typical signal patterns and interpretation are provided in ► **Table S3 (Supplementary material)**. The denaturation and hybridization procedures were performed according to the manufacturer's instructions and counterstained with 4,6-diamino-2-phenyl-indole stain. Fluorescent signals were visualized at 1250 × magnification. The cutoff for TEL/AML1 positivity was 5%. For each case, 200 interphase cells were evaluated by two analysts.

The status of *BCR ABL* fusion and *MLL* gene rearrangement was also evaluated using appropriate probes (► **Table S3**).

RT-PCR: *TEL/AML1* mutation was assessed by RT-PCR in 36 patient samples from December 2019 onward. RNA was extracted from bone marrow/peripheral blood samples in ethylenediaminetetraacetic acid, using Qiagen RNA blood mini kit and, c-DNA synthesis and real time PCR was performed using TRU-PCR ALL Panel Kit Version 2.1 (3B Black Biotech India Ltd, Bhopal, India).

Data on karyotype was available in 92 ALL cases. Twenty-four or forty-eight-hour unstimulated heparinized bone marrow/peripheral blood cultures had been set up as per standard protocol. Twenty metaphases were evaluated, and karyotype reported as per International System for Human Cytogenomic Nomenclature (2016).³¹ Correlation with cytogenetics was done where available.

Statistical Analysis

Since the number of *TEL/AML1* positive cases were few, simple statistical measure, percentage was used to express the prevalence and other data.

Ethics

The procedures followed were in accordance with the ethical standards of the responsible committee on human experimentation and with the Helsinki Declaration of 1964, as revised in 2013. Patient consent was taken prior to the enrolment of participants in the study. Approval of the study was obtained from Basavatarakam Indo American cancer Hospital & Research Institute's ethical committee. (EC Reference study code: 96, dated 27 May 2021).

Results

The patient cohort consisted of 214 B-ALL patients, at diagnosis, both adults and children. Data on demographic, clinical hematological, FISH, and karyotype findings are presented in ► **Tables 1, 2, and 3**. A total of 8.4% (18/214) patients harbored the *TEL/AML1* gene rearrangement. The

Table 1 Clinical, pathological data, FISH, RT-PCR, and karyotype findings in B-ALL patients positive for TEL/AML1 gene rearrangement.

Case no	1	2	3	4	5	6	7	8	9	10	11	12	13	14	15	16	17	18
Age(y) and gender M/F	5 M	3 M	4 M	4 M	2 M	4 M	4 F	18 M	5 M	2 M	8 M	4 M	13 M	5 M	3 M	8 M	6 M	7 M
Clinical presentation and history	Fever and weakness—2 months	Fever and weakness—1 week	Fever—2 weeks and multiple petechial rashes	Fever—1 week and multiple joint pains	Fever—2 weeks and joint pain for 1 week	Fever—1 month, bilateral cervical LN, S+.	Fever—1 month, cough cold—vomiting petechial rash—1 day;H+S+	Fever and AD	Fever and weakness—1 week.	Fever—2 weeks and multiple petechial rashes	Fever—1 month, cough cold, vomiting, petechial rash—1 day. H+S+	Fever—1 week and multiple joint pains	Fever—2 weeks, joint pain—1 week, bilateral cervical LN, S+	Fever—1 month bilateral cervical LN, S+	Fever and pallor	Fever—1 week vomiting	Fever—2 weeks Cough cold	Fever >1 month
HB g/L:	73	62	89	35	69	48	97	85	74	91	116	89	77	74	69	88	76	7
WBCx10(12)/L:	9.7	110	3.2	36.7	5.92	4.5	6.8	17.95	4.59	1.91	6.12	3.66	8.9	1.01	50.31	17.5	11.22	23.62
Platelet x10(9)/L:	100	10	45	12	86	17	65	89	22	74	115	24	15	62	18	50	39	45
PS smear blasts (%)	25	95	10	90	18	6	50	46	0	30	36	65	4		98	70	56	80
BM blasts (%)			85	90	77	88	95	60	95	58	80	88	40	69	77		3	55
PAS	+	+	NC	ND	+	+	+	+	+		N		G +					
B-ALL CD10 +/-	+					+	+		+		-	+	+		+			
Aberrant markers	CD13 & CD33					CD56	CD13 & CD33				CD13 & CD33	CD13			CD13			
TEL/AML1	*P	*P	P	P	P	P	P	P	P	P	P	P	P	P	P	P	P	P
Signal pattern	AT	AT	AT	AT	AT	AT	AT	AT	AT	T	AT	AT	AT	AT	AT			
FISH signal pattern	TG 203F	201F	1G101F	3G101F	2G201F, 2G101F	2G101F	2G101F	2G202F	1G101F	1G102F,	2G202F,	2G101F,	1G101F,	1G101F	2G201F, 3G30			
Interpretation	1	2	3	3+4(1-2)	6(1)3+4 (1) +5(1) 6(2)3+4 (1)	3+4 (1)	3+4 (1)	4(1)+5(1)	3	3	4(1)+5(1)	3+4(1)	3	3	6(1)+P3+4 (2) +5(1) 6(2)+N,4 (1) +5(1)			
Clone no and size (%)	39	61	10	89	38 20	47	42	83	95	64	91	11	8.9	5	P16 N			
BCR-ABL, MLL, E2A-PBX	N/N	N/N	N/N	N/N	ND,N	ND, N	N, N, N	ND, N	ND, N loss of MLL 91%	ND, N	ND, N	, N #N	ND, MLL-ve #N	# N, N	ND, N	ND	ND	ND
Karyotype	NK	NK	NK	NK	IM	NK	NK	NK	NK	NK	NK	*.46	NK	NK	NK	AK	NM	AK

Abbreviations: #, TEL AML1/BCR-ABL(p210,p190)-RT-PCR; +/G +, block/granular positive; AD, abdominal distension; B-ALL, B-acute lymphoblastic leukemia; FISH, fluorescence in situ hybridization; H+S +, hepatosplenomegaly; LN, lymphadenopathy; N, negative; NC, noncontributory; ND, not done; P, positive; RT-PCR, reverse transcription polymerase chain reaction; S +, splenomegaly
 *Cases 1 & 2 (Yyis Probe) & 3-15 (Zytovision Probe). Signal: green: G, orange: O, fusion: F; typical signal pattern:(T), normal nuclei—2G20, abnormal nuclei with fusion—1G201F (Yyis)/ 1G102F (Zytovision). Atypical signal pattern: AT, Interpretation: 1—extra fusion genes TEL/AML1 on der 21q, 2—Del of untranslocated TEL, 3—single fusion loss of AML1/TEL fusion on der 12p, 4—extra copies of AML1 (number), 5—extra copies of TEL (number), additional genetic abnormality: +, 6—clones (Number), clone size (positivity rate). Normal/abnormal karyotype: NK/AK, inadequate/no metaphases: IM/NM, "Ploidy analysis—chromosome number. Case 16: 46,XY,dup(17)(q21q22),t(7:17)(?;q25)[3]/47,XY,+1,dup(17)(q21q22)t(7:17)(?;q25)[3]/46,XY,dup(17)(q21q22)t(7:17)(?;q25),t(7:18)(?;p11.2)[3]/46,XY[7].
 Case 18: 46,XY,inv(11)(p13q13.1)[1]/46,XY,inv(11)(p13q13.1),del(17)(p11.2)[5]/46,XY,inv(11)(p13q13.1),del(12)(p13q13.1),del(17)(p11.2)[8]/46,XY[2].

Table 2 Data of demographic and TEL/AML1 results in 214 B-ALL patients

Parameters	Group 1: 1–18 years	Group 2: 19–39 years	Group 3: >40 years
Overall, no of patients (%)	125(58.41)	63(29.43)	26(12.14)
Median age of presentation (y)	5	26	46.5
No of males	77	45	15
No of females	47	18	11
Gender of baby not disclosed	1		
Male female ratio	1.6:1	2.5:1.0	1.3:1
TEL AML1 fusion positive cases	Total:18/214 (8.41%), FISH:15/178(8.6%) / RT-PCR:3/36(8.3%)		
TEL AML1 fusion positive cases as per age group by both technologies: No (%)	17/125(13.6%)	1/63(1.58%)	–
TEL AML1 negative cases:196/214(91.58%)	TELAML1negative with additional genetic findings:39/163(23.9%)		
Types of additional abnormalities in negative group No of patients (%) & % cells with abnormal findings in different patients.			
Additional copies of AML1— 21(12.8%) 24–92% cells 2 patients:1 copy 4patients:2 copies 1 patient:1–2 copies 2 patients:3 copies 3 patients:3–4 copies 4 patients:4 copies 5patients:5 copies	Additional copies of TELgene –2 patients (1.2%) 43–63% cells–3 copies in each patient	Additional copies of TEL and AML1 genes—8 (4.9%) Patient:2 clones seen: Clone 1–44% cells had 4 copies of only AML1. Another clone–34% cells had 3copies of Tel& 4 copies of AML1 Patient: 2 clones seen. Clone 1: 42.3%cells had 3–4 copies of AML1 only. Clone 2: 28.46% cells had 3 copies of Tel& 3–4 copies of AML1 genes Patient: 3–4 copies AML1&TEL genes seen in 81%cells Patient: Clone1–50% cells had4 copies of AML1&3 copies of TEL gene 2 nd clone–34% had 3 copies of TEL gene Patient:83% cells had 3 copies TEL gene & 77% cells had 3–7 copies of AML1 Patient: 65% cells had 5 copies TEL& 4–5 copies AML1 gene Patient:40% cells had (2 copies) AML1 gene & 1 copy of TEL gene Patient:18% cells had 1 copy of TEL gene and 2 copies of AML1 gene	Deletion of TEL gene and amplification of AML12(1.2%) Patient: Loss of TEL gene in all cells and 40% cells–3 copies of AML1 Patient: Loss of TEL gene and 4 copies AML1–59% cells
			Del of TEL gene6(3.7%) 14.5–86.8% cells

Abbreviations: B-ALL, B-acute lymphoblastic leukemia; FISH, fluorescence in situ hybridization; RT-PCR, reverse transcription polymerase chain reaction.

Table 3 Correlation of FISH and cytogenetic results of 6 cases lacking *TEL/AML1* gene rearrangement

Case no	Cytogenetic findings	FISH findings	Correlation of karyotype and FISH findings
1	47,XX,+8[14],46XX[2]*	<i>TEL/AML1</i> negative, with amplification of the <i>AML1</i> gene—2 copies in 45% cells	Cryptic amplification of <i>AML1</i> gene
2	50–57,XX/XXX,+X[11],+4[10],+5[6],+6[13],+8[6],+9[7],+10[6],+11[8],+12[3],t(?;12)(?;q24.1)[5],+14[4],+15[2],+16[3],+17[12],+18[6],-9[11],+20[3],+21[10][cp16]/46,XX[4]	<i>TEL/AML1</i> negative, amplification of <i>AML1</i> gene (1 copy)	Karyotype demonstrating a+21 corroborating with FISH amplification.
3	46,XY,dup(9)(q34.1q34.1)[4]/47,XY,+mar[2]/46,XY[9]	<i>TEL/AML1</i> negative, amplification of <i>AML1</i> gene 1–2 copies -33%	Cryptic amplification of <i>AML1</i> seen.
4	46,XY,del(8)(p22)[8]/46,XY[6]	<i>TEL/AML1</i> negative, Amplification of <i>Tel</i> and <i>AML1</i> genes	Cryptic amplification of <i>TEL</i> and <i>AML1</i> genes
5	50–53,XXY/XY,+X,+4,+6,+8,+10,+14,+17,+18,+21,+22[cp15]/46,XY[5]	<i>TEL/AML1</i> negative, amplification of <i>AML1</i> gene—2 copies	Karyotype shows gain of chromosome 21 (only 1 copy) and the other copy of <i>AML1</i> is cryptic.
6	54–55,XY,+4[4],+6[2],+8[3],+10[3],+16[1],+17[3],+17×2[1],+18[3],+21[2],+21×2[2],+22[3][cp4]/46,XY[16]13	<i>TEL/AML1</i> negative, amplification of <i>AML1</i> gene—2 copies—58%	Karyotype and FISH demonstrate gain of 2 copies of chromosome 21 and 2 copies of <i>AML1</i> gene

Abbreviation: FISH, fluorescence in situ hybridization.

fusion was detected by FISH in 15/178(8.4%) patients and by RT-PCR in 3/36 (8.3%) patients. The clone size or positivity rate varied from 8.9 to 95%. The fusion was frequent in 17/125 (13.6%) children, aged between 2 and 13 years (median: 4 years), and an 18-year-old young adult. Fusion was noted in 94.4% males (►Table 1).

Additional genetic abnormalities characterized 14/15 (93.3%) patients, reflected as atypical signal patterns on FISH suggestive of various abnormalities (►Table 1) (►Fig. 1).

TEL/AML1 fusion was absent in 91.58% cases. Additional genetic abnormalities were also noted in 23.9% of these patients, with amplification of *AML1*, seen more often (►Table 2).

Cytogenetic analysis in 92 B-ALL patients revealed the karyotype was normal in 57 (61.95%) and abnormal in 35/92 (38.04%) patients. It is important to note that 14 patients with normal karyotype and cases 16 and 18 with abnormal complex cytogenetics had *TEL/AML1* rearrangement/ mutation. Case 18 showed evidence of del(12)(p13) in 60% metaphases (►Table 1-footnote).

Correlation of FISH results and cytogenetics demonstrated *TEL/AML1* rearrangement to be the sole abnormality and mutually exclusive as BCR ABL and MLL were negative for rearrangement in all cases wherever done. Additional genetic abnormalities noted in the positive group, occurred when the chromosome complement was 46 with two intact homologous chromosomes 12 and 21 suggesting that the abnormalities were submicroscopic/cryptic level.

Among the 39 cases negative for *TEL/AML1* rearrangement but with additional abnormalities, karyotype was normal in 8 and abnormal in 6 cases. Correlation studies demonstrated that the loss or gain of the genes was cryptic in

the former. However, in six cases having an abnormal karyotype, *AML1* amplification was cryptic in 50% and corroborated by additional chromosome 21 (►Table 3).

Complete blood count (CBC) in patients positive for *TEL/AML1* fusion revealed low hemoglobin in all patients (range: 35–116 g/L, median: 74 g/L), high white blood cell (WBC) counts in 8/18 (44.4%) and 7/17(41.2%) pediatric patients (range: 11.2–110 × 10⁹/L) and low counts in 4/18 (22.2%) and 4/17 pediatric patients (23.52%) (range: 1.01–3.6). Platelet counts were low in all patients (range: 10–115 × 10⁹/L, median: 42 × 10⁹/L). The blasts ranged from 0 to 98% (median: 41%) in peripheral smear and 0 to 95% (median: 80%) in the bone marrow (►Fig. 2). Immunophenotyping revealed patients had CD34 positive phenotype, common acute lymphoblastic leukemia associated antigen (CALLA) positive in 17/18 (94.4%) and aberrant expression of CD13, CD33, CD56, singly or in combination in 10/17(58.8%) patients. Coexpression of CD13 and CD33 occurred in 70% (►Fig. 3), only CD3 in 20%, and only CD56 in 10%.

Treatment and follow-up details: All the 18 patients were treated with ALL-Berlin-Frankfurt-Munster (BFM 95) protocol. One child died after 1 month due to thrombotic complication. Three patients completed induction and consolidation and lost to follow-up. Fourteen patients who completed the whole treatment are alive and disease free. The median survival among those who completed treatment is 35.5 months (range: 19–44 months).

Discussion

ALL is the most frequent malignancy accounting for 85% of all childhood leukaemia.^{32–36} B-ALL constituted 76% of all ALL that

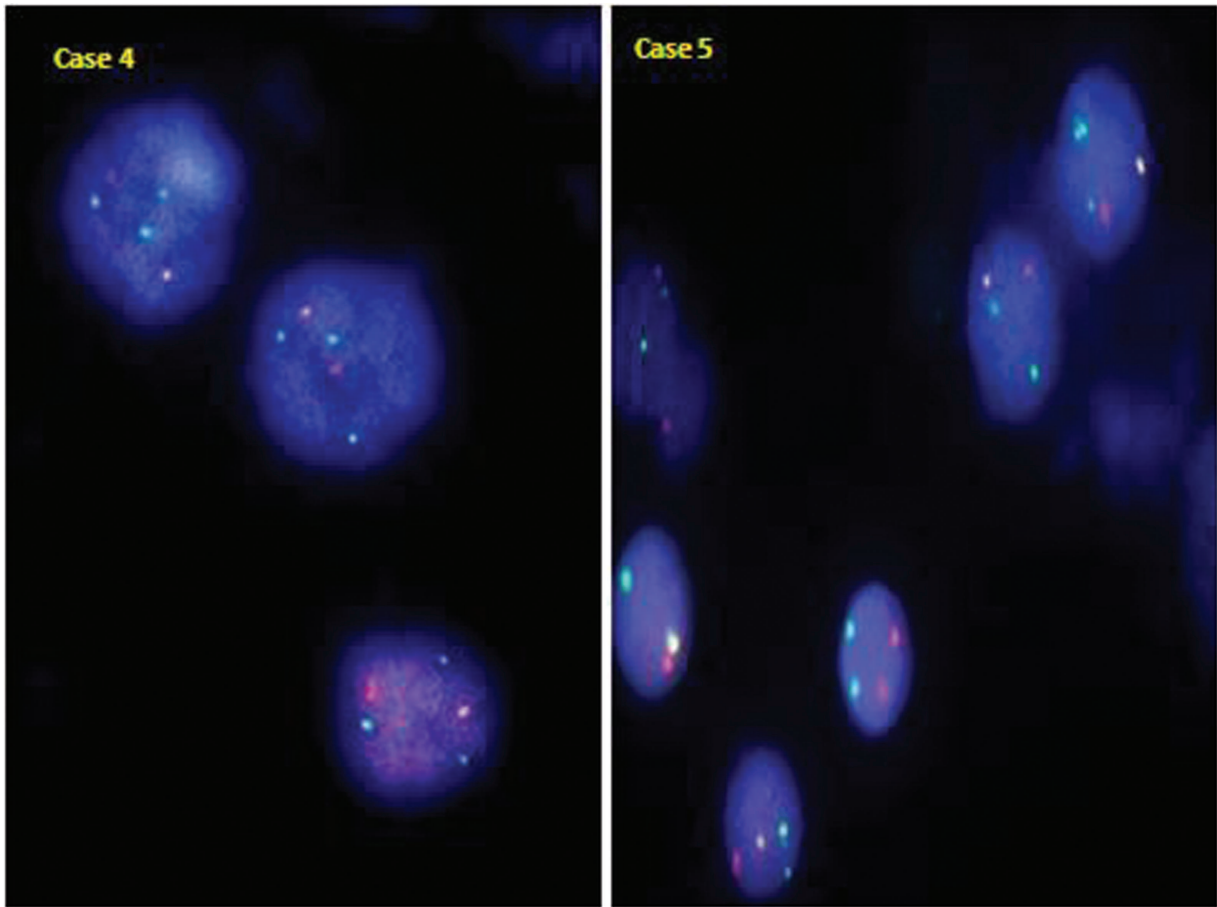


Fig. 1 TEL/AML1 positive case with an atypical signal pattern showing 1 fusion with additional copies of *AML1* (green) and *TEL* (orange) gene in case 4 and an additional copy of only *AML1* gene (green) in case 5 (clone 2).

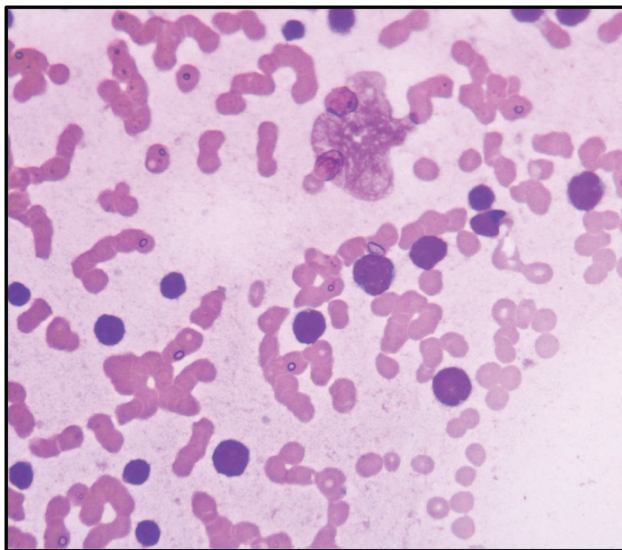


Fig. 2 Blasts showing high N/C ratio coarse chromatin and scanty cytoplasm (Leishman stain,400x).

comprised of predominantly CALLA positive ALL in 73%, early precursor pro B-ALL in 3%.³³ The World Health Organization classification of hematopoietic and lymphoid tissue (2017) defines B lymphoblastic leukemia/lymphoma into various sub-

types including “B lymphoblastic leukemia/lymphoma with 7 recurrent genetic abnormalities.”¹ Conventional cytogenetics, interphase FISH, RT-PCR find application in the detection of recurrent genetic abnormalities as they play a pivotal role in prognostication, selection of therapy, and response to treatment.^{1,13,31–37}

Translocation $t(12;21)(p13;q22)$, a somatically acquired early lesion, results in the critical *TEL/AML1* fusion on chromosome 21, and *AML1/TEL* fusion on derivative 12p that can be lost. *TEL* allele is often deleted the fusion protein acts in a dominant negative fashion inhibiting the normal function of transcription factor *AML1*.⁴ The abnormality can occur as a sole abnormality or within the context of a complex karyotype characterized by three or more chromosomal abnormalities. Conventional cytogenetics is the gold standard to detect both known and unknown genomic abnormalities in the genome; however, poor chromosome morphology, few malignant metaphases encountered in ALL, and inherent cytogenetic invisibility of the abnormality limit the detection of $t(12;21)$ to 0.05% of patients. Cryptic and subtle abnormalities, below 7 to 8 MB resolution, can be missed on karyotyping. FISH and RT-PCR enable detection of *TEL/AML1* in 20 to 25% of precursor B ALL.² Translocation $t(12;21)$ has a favorable outcome and useful for the prediction of outcome in childhood ALL. Coexistence of the same,

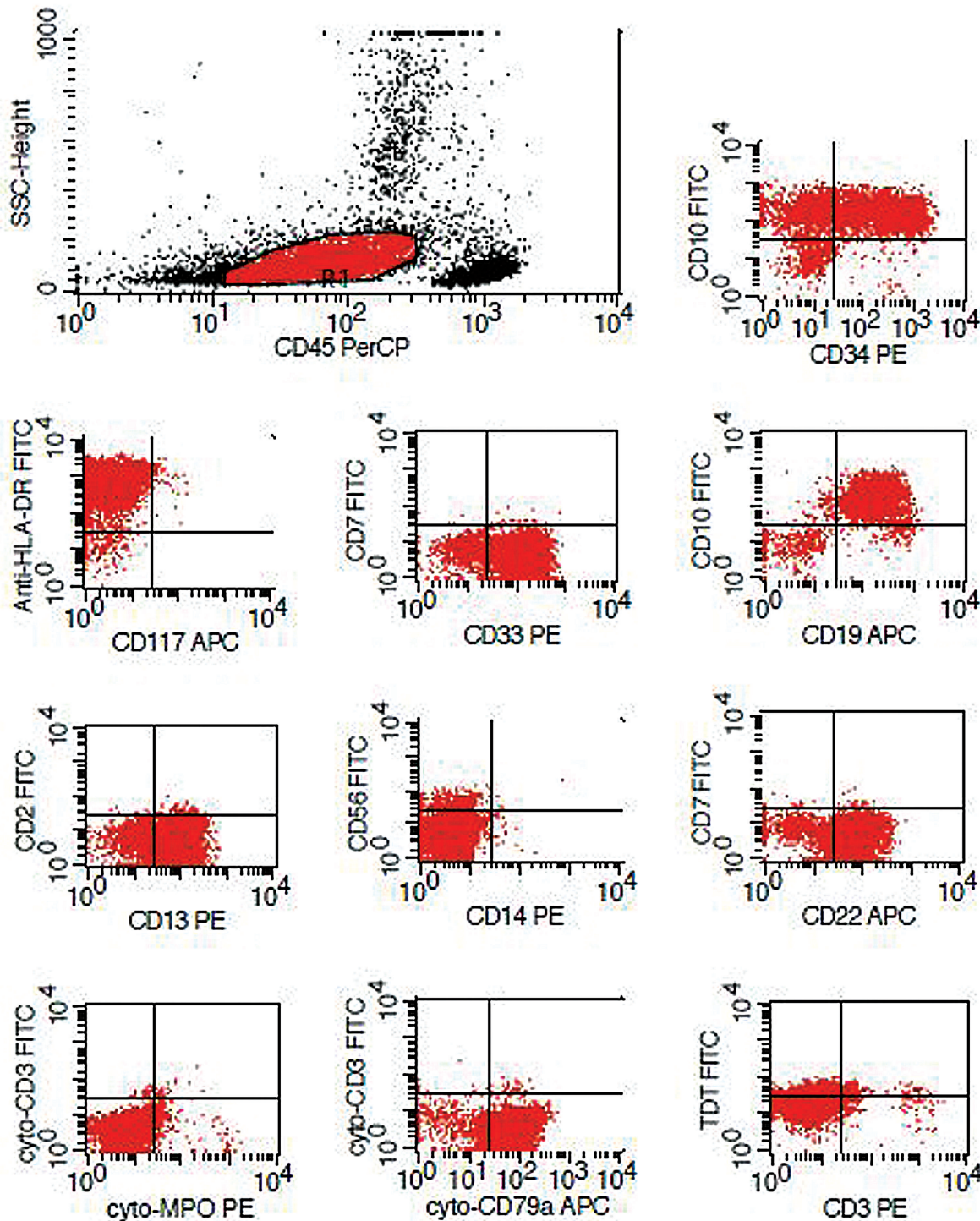


Fig. 3 Immunophenotyping in a prototype case showing aberrant expression of CD13 and CD33.

with other gene rearrangements and in complex setting, favors poorer clinical outcome.

B-ALL patients with t(12;21) abnormality are younger, ~3–5 years, blasts have B precursor phenotype, and are CD19, CD10 and CD34 positive with expression of myeloid antigens CD13, sensitive to chemotherapy and associated with favorable prognosis and late relapse.^{1–3,33} TEL/AML1

fusion is seen rarely in adults (1–4%);^{2,3} however, increased numbers of adults diagnosed with B ALL, prompted assessment for the same. In the present study, under-representation of the cryptic TEL/AML1 rearrangement overall (8.4%) and in children (13.6%) is low contrary to the expected high prevalence of 25% in western countries.⁴ Hospital-based reports,^{5–7,9,12–30} international projects,^{1,10,24} multicenter

studies,^{11,24} and review articles^{8,15} indicated existence of geographical differences in distribution of *TEL/AML1* worldwide, including India (► **Table S1** and **S2**). Global studies indicated the incidence of *TEL/AML1* positive B ALL was high ranging from 17% in Spain,⁶ 18.9% in Brazil,¹⁷ 28% in Tunisia,⁷ 31% in United States,⁵ 37.5% in Egypt,¹⁴ to 40% in Israel.¹⁸ Exception was Turkey (8.5%).¹⁶ The incidence was low in Asian countries, 14.1 to 17.9% in China and Korea,^{13–15} 5 to 10.6% in Pakistan,^{10–12} and 0 to 19.8% in north and western India,^{19–26} 8.3% in Chennai,²⁷ 4.3% in Karnataka,²⁸ 4.8% in Kerala,²⁹ and 13.64% in Hyderabad.³⁰ The low prevalence of *TEL/AML1* positivity is 13.6% children with B-ALL, which resonates with previous studies from this region.^{27,30} Variation in the incidence of *TEL/AML1* positivity may be dependent on the technology used. When conventional cytogenetics and FISH were used for testing, the global incidence varied from 8.3 to 19.8%^{13,17,25–27} however, when only FISH was used it varied from 8.5 to 40%,^{5–7,9,14,16,18,28,30} and 4.3 to 13.64% in south India.^{28,30} RT-PCR enabled detection of patients with the abnormality in 7.4 to 10.8% in developing countries like Pakistan^{10–12} and in 0 to 16.2% in India.^{19–22,24,29} Preselection of precursor B ALL enabled increased detection of the *TEL/AML1* rearranged cases. Affordability for the test is an important factor. In the present study, both technologies enabled detection of the fusion gene at the same rate of 8.3 to 8.4%. The population studied, sample size, patient selection, technology(s) used for testing affect the detection rate. If FISH is the modality, the probes used in house/commercial, company, design of the probe, size, validation, cutoff value set, and interpretation are important for defining the status of the abnormality. For RT-PCR, the primers were used.

It is well known that reciprocal translocation t(12;21) (p13;q22) results in the pathogenic *TEL/AML1* fusion on chromosome 21, and *AML1/TEL* fusion on derivative 12p. The latter may be lost sometimes. Deletion of *TEL* allele on the normal chromosome as a consequence of del(12)(p12) and duplication of der(21)t(12;21) that looks like a +21 hyperdiploid karyotype with <5 *AML1* and rarely gene amplification with cluster of >5 or intra-chromosomal amplification of *AML1* is also encountered. Interphase FISH enabled the detection of not only *TEL/AML1* fusion but also associated additional genetic abnormalities in 93% of these cases and in the negative group too. The reported loss of the untranslocated *TEL*,^{5,7,14,16,25,27} duplication of *TEL/AML1* fusion (der 21t(12;21)) were seen infrequently in our study as compared with 35 and 17%, respectively, reported previously.²⁵ An unusual finding was the occurrence of cryptic loss of the reciprocal *AML1-TEL* fusion on der12p in 66.5% of our patients. This appears to be rare⁸ and has not been reported earlier from this region. Loss of derivative 12p was also associated with extra copy(s) of *AML1* in 40%, with amplification of *TEL* gene (33.3%). These findings were consistent with the previous reports.^{5–8,13,14,16–18} *TEL/AML1* rearrangement with one or more copies of der 21t(12;21) has been reported in 42 to 50% with additional abnormalities,^{5,6,8,13,17,18,38} including additional *AML1* in 6 to 23.8% patients,^{5–7,14,16,25} and clones with loss of *TEL* gene

and an extra *AML1* in 9.5%.⁶ Duplication of the fusion gene is rare and may occur in the form of duplication of der 21t(12;21) or ider 21(q10)t(12;21). *TEL* gene functions as a tumor suppressor gene, and its function may be inhibited when in combination with *TEL/AML1* fusion in a dominant negative fashion. Alternatively, *TEL* gene may inactivate the fusion protein necessitating the deletion of the *TEL* gene for leukemogenesis. Submicroscopic deletions and point mutations of *TEL* homologue may contribute to inactivation of *TEL*.²⁵ Additional genetic abnormalities in relation to the cryptic t(12;21) translocation are envisaged to be secondary events critical to leukemogenesis and not disease progression. The significance of additional genetic changes with respect to clinical features and outcome between presence or absence is debatable.¹⁴

The observation of *TEL/AML1* rearrangement and additional genetic abnormalities detected by FISH in patients having normal cytogenetics in 14/18 (77%) patients, complex karyotype in 2 (11.11%), one with 12p deletion in 80% metaphases connoting loss of *AML1/TEL* fusion, and the other case with nonrandom chromosomal abnormalities indicate (1) *TEL/AML1* rearrangement is the sole, cryptic abnormality; (2) additional mutational events were submicroscopic too, and (3) the normal karyotype is actually a pseudodiploid karyotype.

Evaluation of clinical and pathological features demonstrated occurrence of *TEL/AML1* positivity mainly in children (94.4%), aged 2 to 13 years (median: 4 years) predominantly among males (94.1%). The fusion was absent in all adults tested. The patients had classic CD34 and CD10 positive phenotype (CALLA positive B-ALL) with aberrant expression of cross lineage antigens, CD13 and CD33.^{2,33} WBC counts were high in 44.4% patients, low in 22.2%, and rest within normal range. Another study demonstrated significant association of *TEL/AML1* positive group with lower age group > 1 to 5 years (median: 5 years), WBC counts of 10–20 × 10⁹/L (median: WBC count of 11.2 × 10⁹/L), CD34 negative phenotype, and absence of CD13/33 myeloid marker expression and low relapse rate.²⁵

Our hospital is a regional tertiary care cancer center for cancer treatment in a metropolitan city. The possibility of geographic variation in presentation of the disease cannot be ruled out. India is genetically and ethnically a diverse country. Genetic propensity for *TEL/AML1* fusion in childhood ALL has been described.³⁷ Regional, population based, biological differences, gene–environment interactions, are critical in leukemogenesis and may differentially contribute to the prevalence of *TEL/AML1* fusion occurrence.

This study revealed additional genetic abnormalities in 23.9% *TEL/AML1* negative patients lacking the *BCR-ABL* and *MLL* gene rearrangement. These include extra *AML1* copies, extra *AML1*, alone or in combination with *TEL* aberrations (amplification or deletion) and abnormalities of *TEL* gene (► **Table 2**). Extra *AML1* was cryptic or corroborated by cytogenetics (► **Table 2**). One study reported no loss of *TEL* homologue, extra copies of *AML1* in 37%. The authors cited that *AML1* may be the current target of genetic abnormalities in ALL and acute myeloid leukemia, which probably induces

the transcriptional defect in *AML1* in the process of leukemogenesis, and showed abnormalities. These occur as a consequence of “tri/tetra/polysomy 21, high degree of amplification, and jumping translocations/insertions.” The biological significance of the observed anomalies is not known. Although we have not analyzed these cases for clinicopathological correlations, *TEL/AML1* negative cases with extra *AML1*/trisomy 21 were reported to be associated with CD13/33-negative and CD34-positive phenotype, low LDH value, low WBC counts, age ranging from 1 to 5 years, high hyperploidy.²⁵ B-ALL with *iAMP21*¹ has been defined as the presence of 3 or more *RUNX1* signals on one marker chromosome or a total of five or more *RUNX1* signals per cell. Metaphase FISH with Vysis *TEL/AML1* dual color dual fusion probes display one signal connoting a normal chromosome 21, and several red signals along an abnormal chromosome 21 as tandem duplication, while interphase FISH displays a cluster of red signals (*AML1*) and one separate red signal representing the normal chromosome 21.^{1,38,39} To the best of our knowledge, interphase FISH showed distinct well separated signals of *AML1*, and no localized clusters in all with multiple copies of *AML1*. However as per the definition, three patients with five or more *AML1* signals per cell can be construed as having an *iAMP* amplification. It is important to identify patients with *iAMP* who have a poor prognosis.

Each technology has its advantages and limitations. Prevalence of good prognostic *TEL/AML1* positive patients was found to be low at this center. Multicenter studies should be undertaken to understand this genetic subtype of B-ALL better in larger sample volume and prognostic implications.

The recurrent genetic abnormalities tested in B-ALL patients have revealed large number of patients lacking these abnormalities and need further interrogation. Comprehensive emerging technologies have identified several genetic determinants. Next-generation sequencing and other evolving technologies will address these genetic abnormalities. Hence, use of orthogonal testing and algorithmic approach will propel identification of new entities in our population.

Conclusion

This is the first hospital-based large study from south India demonstrating low prevalence of cryptic *TEL/AML1* in 13.6% children with BALL, lower than western data but comparable with south Indian studies. FISH was useful in identifying unique additional genetic abnormalities in *TEL/AML1* positive and negative cases. Clinicopathologic associations were classic. The study adds to the Indian data. The detection of relevant specific abnormalities in B-ALL patients is of fundamental importance.

Source(s) of Support

Nil.

Presentation at a Meeting

None.

Conflict of Interest

None.

Acknowledgment

Authors would like to thank, the, contribution of the DNB residents who performed bone marrow aspiration and biopsy for evaluation and diagnosis, Mr. Janaiah, and Mr. K Ramchander Reddy for technical support for enabling CBC, flowcytometry, conventional cytogenetics, and Mrs. M Padma Rani for processing blood/bone marrow samples for FISH analysis.

References

- Borowitz MJ, Chan JKC, Downing JR, Le Beau MM, Arber DA. B lymphoblastic leukemia/lymphoma with recurrent genetic abnormalities. In: Swerdlow SH, Campo E, Harris NL, Jaffe ES, Pileri SA, Stein H, Thiele J, eds. WHO Classification of Tumours of Hematopoietic and Lymphoid Tissues. 4th edition. Lyon: IARC; 2017:203–209
- Naeim F, Rao PN. Acute myeloid leukemia. In: Naeim F, Rao PN, Grody WW, eds. Hematopathology Morphology, Immunophenotype, Cytogenetics, and Molecular Approaches. 1st edition Amsterdam: Elsevier; 2008:207–255
- Terwilliger T, Abdul-Hay M. Acute lymphoblastic leukemia: a comprehensive review and 2017 update. Blood Cancer J 2017;7 (06):e577
- Zelent A, Greaves M, Enver T. Role of the TEL-AML1 fusion gene in the molecular pathogenesis of childhood acute lymphoblastic leukaemia. Oncogene 2004;23(24):4275–4283
- Zhang L, Parkhurst JB, Kern WF, et al. Chromosomal changes detected by fluorescence in situ hybridization in patients with acute lymphoblastic leukemia. Chin Med J (Engl) 2003;116(09): 1298–1303
- Martínez-Ramírez A, Urioste M, Contra T, et al. Fluorescence in situ hybridization study of TEL/AML1 fusion and other abnormalities involving TEL and AML1 genes. Correlation with cytogenetic findings and prognostic value in children with acute lymphocytic leukemia. Haematologica 2001;86(12):1245–1253
- Gmidène A, Elghezal H, Sennana H, et al. ETV6-RUNX1 rearrangement in Tunisian pediatric B-Lineage acute lymphoblastic leukemia. Adv Hematol. 2009;2009:924301.
- Al-Sweedan SA, Neglia JP, Steiner ME, Bostrom BC, Casey T, Hirsch BA. Characteristics of patients with TEL-AML1-positive acute lymphoblastic leukemia with single or multiple fusions. Pediatr Blood Cancer 2007;48(05):510–514
- Mosad E, Hamed HB, Bakry RM, Ezz-Eldin AM, Khalifa NM. Persistence of TEL-AML1 fusion gene as minimal residual disease has no additive prognostic value in CD 10 positive B-acute lymphoblastic leukemia: a FISH study. J Hematol Oncol 2008;1:17
- Siddiqui R, Nancy N, Naing WP, et al. Distribution of common genetic subgroups in childhood acute lymphoblastic leukemia in four developing countries. Cancer Genet Cytogenet 2010;200(02): 149–153
- Iqbal Z. Molecular genetic studies on 167 pediatric ALL patients from different areas of Pakistan confirm a low frequency of the favorable prognosis fusion oncogene TEL-AML1 (t 12; 21) in underdeveloped countries of the region. Asian Pac J Cancer Prev 2014;15(08):3541–3546
- Khan A, Ayyub M, Ahmed S, Altaf CH, Malik HS. Frequency of three different gene mutations (TEL-AML1, E2A–PBX1 and MLL-AF4) in acute lymphoblastic leukaemia. Hematol Transfus Int J 2016; 2:00045
- Woo HY, Kim DW, Park H, Seong KW, Koo HH, Kim SH. Molecular cytogenetic analysis of gene rearrangements in childhood acute lymphoblastic leukemia. J Korean Med Sci 2005;20(01):36–41

- 14 Chung HY, Kim KH, Jun KR, et al. [Prognostic significance of TEL/AML1 rearrangement and its additional genetic changes in Korean childhood precursor B-acute lymphoblastic leukemia]. *Korean J Lab Med* 2010;30(01):1–8
- 15 Chen B, Wang YY, Shen Y, et al. Newly diagnosed acute lymphoblastic leukemia in China (I): abnormal genetic patterns in 1346 childhood and adult cases and their comparison with the reports from Western countries. *Leukemia* 2012;26(07):1608–1616
- 16 Aydin C, Cetin Z, Manguoglu AE, et al. Evaluation of ETV6/RUNX1 fusion and additional abnormalities involving ETV6 and/or RUNX1 genes using fish technique in patients with childhood acute lymphoblastic leukemia. *Indian J Hematol Blood Transfus* 2016;32(02):154–161
- 17 Zen PRG, Lima MC, Coser VM, et al. Prevalence of TEL/AML1 fusion gene in Brazilian pediatric patients with acute lymphoblastic leukemia. *Cancer Genet Cytogenet* 2004;151(01):68–72
- 18 Yehuda-Gafni O, Cividalli G, Abrahamov A, et al. Fluorescence in situ hybridization analysis of the cryptic t(12;21) (p13;q22) in childhood B-lineage acute lymphoblastic leukemia. *Cancer Genet Cytogenet* 2002;132(01):61–64
- 19 Sazawal S, Bhatia K, Gutierrez MI, Saxena R, Arya LS, Bhargava M. Paucity of TEL-AML 1 translocation, by multiplex RT-PCR, in B-lineage acute lymphoblastic leukemia (ALL) in Indian patients. *Am J Hematol* 2004;76(01):80–82
- 20 Bhatia P, Binota J, Varma N, et al. Incidence of common chimeric fusion transcripts in B-cell acute lymphoblastic leukemia: an Indian perspective. *Acta Haematol* 2012;128(01):17–19
- 21 Varma N, Naseem S, Binota J, Varma S, Malhotra P, Marwaha RK. Study of incidence of recurrent genetic translocation in adult and pediatric acute lymphoblastic leukemia (ALL) patients in north India. *International Journal of Epidemiology* 2015;44: i234–35
- 22 Chopra A, Soni S, Verma D, et al. Prevalence of common fusion transcripts in acute lymphoblastic leukemia: a report of 304 cases. *Asia Pac J Clin Oncol* 2015;11(04):293–298
- 23 Inamdar N, Kumar SA, Banavali SD, Advani S, Magrath I, Bhatia K. Comparative incidence of the rearrangements of TEL/AML1 and ALL1 genes in pediatric precursor B acute lymphoblastic leukemias in India. *Int J Oncol* 1998;13(06):1319–1322
- 24 Siraj AK, Kamat S, Gutiérrez MI, et al. Frequencies of the major subgroups of precursor B-cell acute lymphoblastic leukemia in Indian children differ from the West. *Leukemia* 2003;17(06): 1192–1193
- 25 Pais AP, Amare Kadam PS, Raje GC, et al. RUNX1 aberrations in ETV6/RUNX1-positive and ETV6/RUNX1-negative patients: its hemato-pathological and prognostic significance in a large cohort (619 cases) of ALL. *Pediatr Hematol Oncol* 2008;25(06): 582–597
- 26 Kerketta LS, Baburao V, Ghosh K. Pattern of chromosome involvement in childhood hyperdiploid pre-B-cell acute lymphoblastic leukemia cases from India. *Indian J Hum Genet* 2014;20(01): 32–36
- 27 Magatha LS, Scott JX, Subramaniam G, Chandrasekaran T, Paul SFD, Koshy T. Cytogenetic and fluorescence in situ hybridization (FISH) profile of paediatric acute lymphoblastic leukemia (ALL) in a University Hospital in South India. *Med Princ Pract* 2021; 30:563–570
- 28 Mazloumi SH, Madhumathi DS, Appaji L, Prasannakumari . Combined study of cytogenetics and fluorescence in situ hybridization (FISH) analysis in childhood acute lymphoblastic leukemia (ALL) in a tertiary cancer centre in South India. *Asian Pac J Cancer Prev* 2012;13(08):3825–3827
- 29 Hill A, Short MA, Varghese C, Kusumakumary P, Kumari P, Morgan GJ. The t(12:21) is underrepresented in childhood B-lineage acute lymphoblastic leukemia in Kerala, Southern India. *Haematologica* 2005;90(03):414–416
- 30 Siddaiahgari SR, Awaghad MA, Latha MS. Clinical, immunophenotype and cytogenetic profile of acute lymphoblastic leukemia in children at tertiary health care centre in India. *Muller J of Medical Sciences and Research* 2015;6:112–118
- 31 An International System for Human Cytogenomic Nomenclature (2016). Editors: McGowan-Jordan Simons A, Schmid M. *Cytogenetic and Genome Research*, Vol. 149, No.1–2, 2016.
- 32 Marwaha RK, Kulkarni KP. Childhood acute lymphoblastic leukemia: need of a national population based registry. *Indian Pediatr* 2011;48(10):821
- 33 Gujaral S, Badrinath Y, Kumar A, et al. Immuno-phenotypic profile of acute leukemia: Critical analysis and insights gained at a tertiary care center in India. *Blood* 2008;112:4878
- 34 Swaminathan R, Rama R, Shanta V. Childhood cancers in Chennai, India, 1990–2001: incidence and survival. *Int J Cancer* 2008;122(11):2607–2611
- 35 Arora RS, Eden TO, Kapoor G. Epidemiology of childhood cancer in India. *Indian J Cancer* 2009;46(04):264–273
- 36 Tyagi BB, Manoharan N, Raina V. Childhood cancer incidence in Delhi, 1996–2000. *Indian J Med Paediatr Oncol* 2006;27:13–18
- 37 Ma SK, Wan TSK, Cheuk ATC, et al. Characterization of additional genetic events in childhood acute lymphoblastic leukemia with TEL/AML1 gene fusion: a molecular cytogenetics study. *Leukemia* 2001;15(09):1442–1447
- 38 Yang M, Yi ES, Kim HJ, Yoo KH, Koo HH, Kim SH. Intrachromosomal amplification of chromosome 21 in Korean pediatric patients with B-cell precursor acute lymphoblastic leukemia in a single institution. *Blood Res* 2017;52(02):100–105
- 39 Harrison CJ, Haas O, Harbott J, et al; Biology and Diagnosis Committee of International Berlin-Frankfurt-Münster study group. Detection of prognostically relevant genetic abnormalities in childhood B-cell precursor acute lymphoblastic leukaemia: recommendations from the Biology and Diagnosis Committee of the International Berlin-Frankfurt-Münster study group. *Br J Haematol* 2010;151(02):132–142